

**“Connecting Families: Making Use of
Grass-roots Community- based
Solutions Where Families Live,
Learn, Play and Succeed.”**

Federation of Families for Children's Mental Health

18th Annual Conference St. Louis, Missouri

Presented by: Michelle M. Mills MSSA,LSW, Teresa King, Parent Lead, Barbara Heard, Parent Advocate, Cathy Moore, Parent Representative

What is a Settlement House?

- A settlement house is an A neighborhood welfare institution generally in an urban slum area, where trained workers endeavor to improve social conditions, particularly by providing community services and promoting neighborly cooperation.

How do they work?

- Community organizing
- Meeting community need
- Strengths-based
- Family driven
- Community involvement
- Advocacy
- Family Strengthening-serving the entire family

Why partner with a Settlement House?

- Operate where families live
- Autonomous policies and procedures
- Flexibility to meet the need of the community
- Private and public influence is limited
- Over 800 Settlement House in the country



Bringing together

Neighborhood/community based services

&

**Mental health services for
children and their families**

**= Cuyahoga Tapestry System
of Care**

What Is Tapestry?

- Cuyahoga Tapestry System of Care is a partnership of the county child serving systems and community and neighborhood provider organizations that uses a seamless process to provide the children and families of Cuyahoga County with personalized, compassionate and relevant support services.

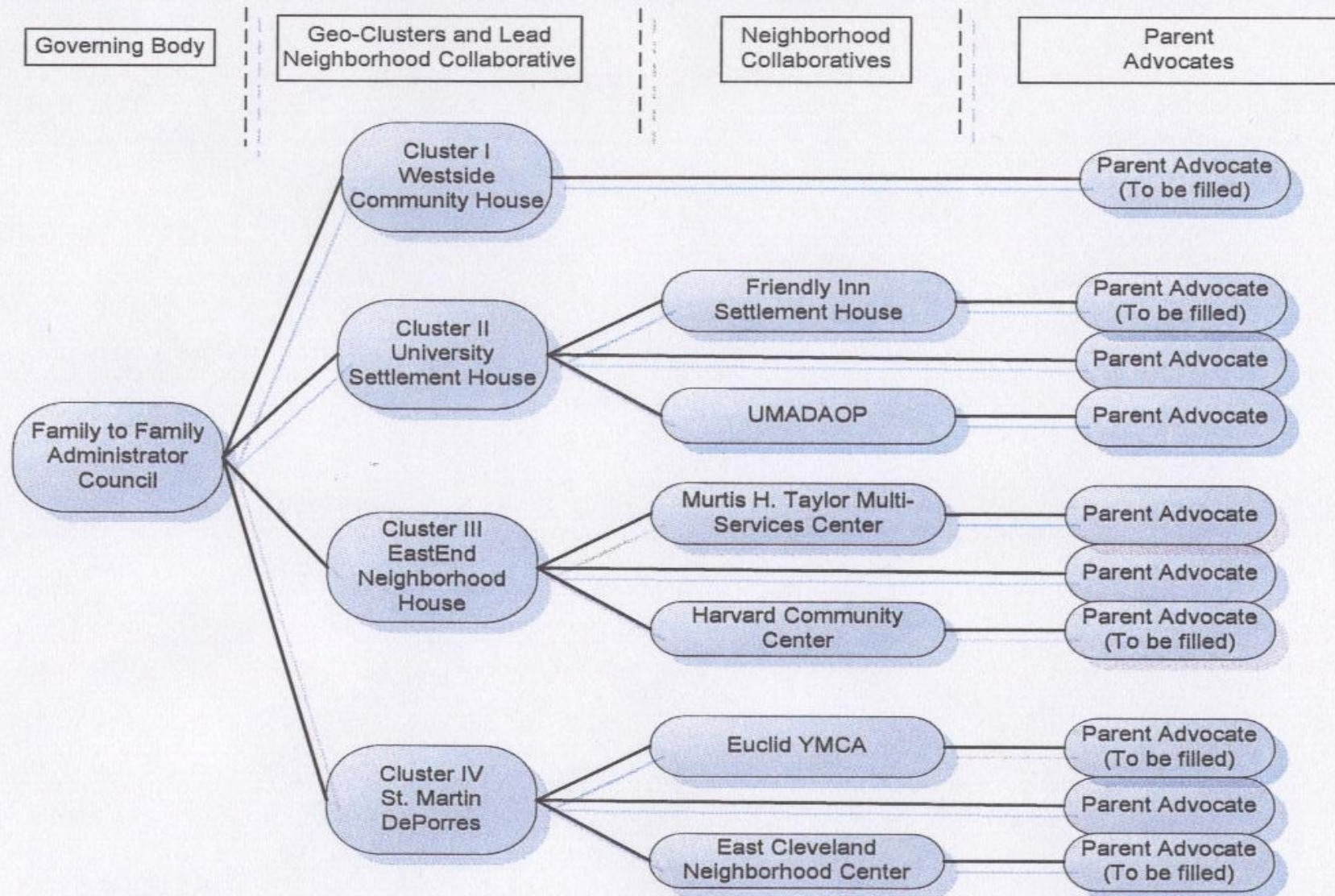
What is System of Care in Cuyahoga County

- Network of community based services
- A partnership with families, community and multiple public systems
- Strengthens families to function better at home, in school, in the community and throughout life

Cuyahoga Tapestry System of Care utilizes.....

- “Wraparound” services
- Strengths and culture of each family
- Community services
- Natural supports
- Interdisciplinary teams
- Innovative and non- traditional solutions

Figure Y. Family Organization Structure





Building Partnerships with Families

Advocating

Educating

Supporting

Empowering

One Family at a time

Advocating for Families means that we make efforts....

- To ensure the family voice is heard
- To eliminate isolation
- To serve as an inspiration to families
- To identify the culture of each family
- To determine the best way to ensure professionals hear families and families hear professionals

How we Educate our families.....

- Share information
- Host monthly support groups
- Conduct NAMI (National Alliance of Mental Illness) Hand-To-Hand curriculum
- Offer problem solving information (life-skills)
- Invite families to community meetings and encourage families to be active on relevant committees

How we are able to Support our families....

- We listen
- We live where we work
- We are a part of a multi-service community-based agency
- We serve all families
- We have an open door
- We historically have been the trusted agency in our neighborhood
- We have personal experience

How we Empower our Families

- Identify a list of options and a way to decide which one is best
- Clarify and communicate their decision to others
- We make families aware of consequences as well as choices
- Build partnerships with others including professionals who are involved in the care of our families
- We encourage families to become involved in decision making such as policies, levy's etc..
- We understand we have a collective destiny



**Supported, Educated and
Empowered Families**

Equals

Strengthened Families

